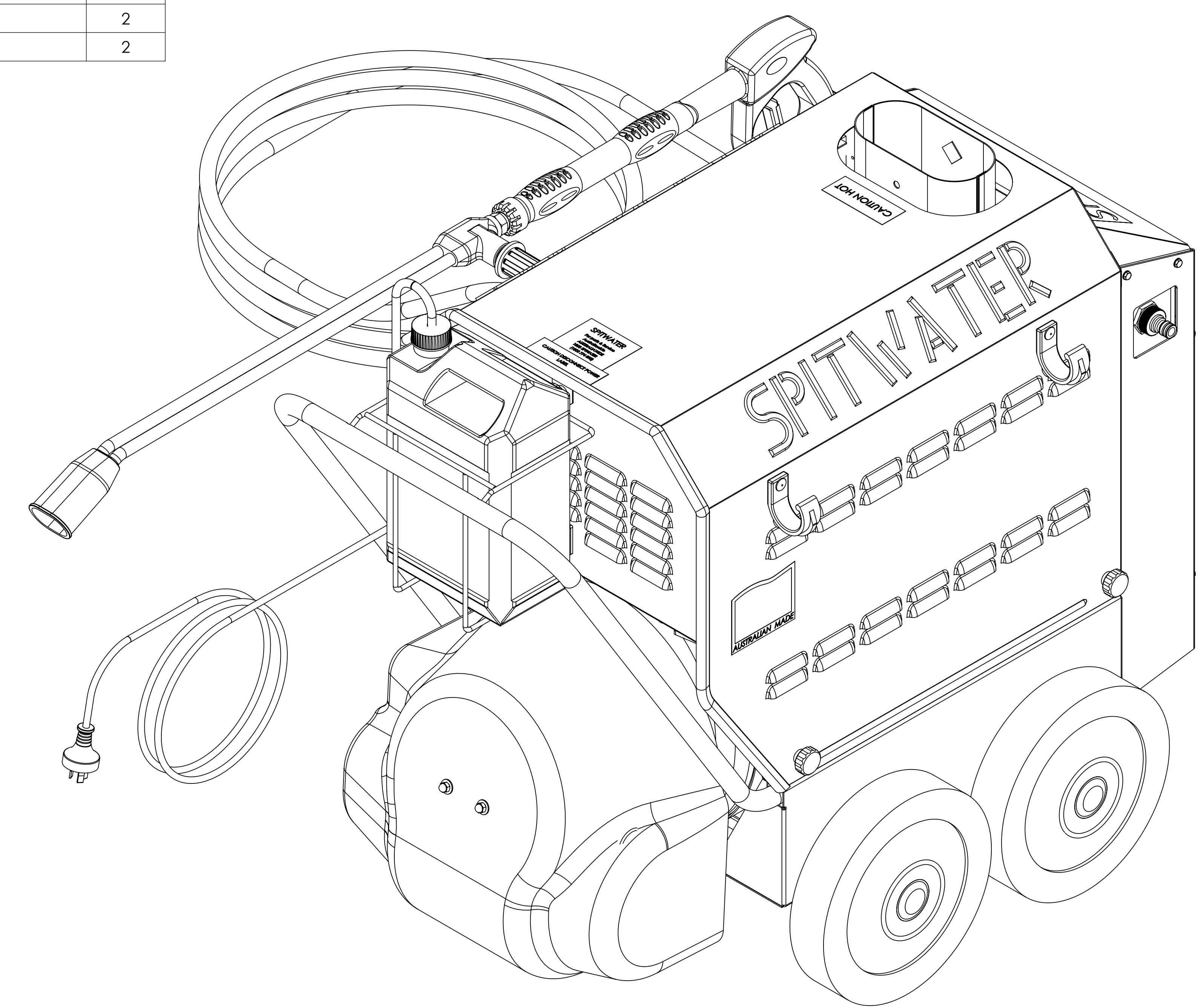


PROPRIETARY, CONFIDENTIAL AND COMPLIANCE: THE INFORMATION CONTAINED IN THIS DRAWING IS THE SOLE PROPERTY OF SPITWATER AUSTRALIA. ANY REPRODUCTION IN PART OR AS A WHOLE WITHOUT THE WRITTEN PERMISSION OF SPITWATER AUSTRALIA Pty.Ltd. IS PROHIBITED. ANY CHANGES REQUIRE ENGINEERING OFFICE APPROVAL PRIOR TO IMPLEMENTATION. IF IN DOUBT - CONSULT YOUR TEAM LEADER OR PRODUCTION MANAGER.

ITEM NO.	PART NUMBER	MATERIAL	DESCRIPTION	QTY.
1	48026		FRAME COMPLETE	1
2	48030-01		DIESEL TANK	1
3	48032-01		BREAK TANK	1
4	PA29016020		RGO FLOAT VALVE 10bar 60° C 29l/m @ 2bar	1
5	48875	70075/T	SPLASH PROTECTION,85 WIDE	1
6	70200-Z	70043/A	WASHER ALUMINIUM 3/4"	1
7	48784		SUCTION FILTER 3/8" F BSPP	1
8	44005	70291/R	ELBOW 3/8" F BSPP - 11mm HOLE	1
9	70559		TAIL PIECE COMPLETE 3/4" F BSPP - SNAP ON	1
10	44541	70291/H	HOSE BARB 1/8" M BSP T - 1/4" HOSE BARB	2
11	48775	70291/P	HOSEBARB 3/8" M BSPT - 1/2" BARB	2
12	48701		DIESEL FILTER	1
13	47039	70291/M	HOSE BARB 1/4" M BSPT-1/4" HOSE BARB	2
14	70036-N00330	70036/N	HOSE PETROCAR 10L/L dn 6 X 13 330mm	1
15	70036-N00880	70036/N	HOSE PETROCAR 10L/L dn 6 X 13 880mm	1
16	70036-N00880	70036/N	HOSE PETROCAR 10L/L dn 6 X 13 880mm	1
17	44906-A	70044/G	INSULATION	1
18	48504		CYLINDER COMPLETE	1
19	48040-C		COIL MINI 3/8" M BSPP INLET 1/2" F BSPP	1
20	47134	70291/U	NIPPLE 1/2" M BSPT - 3/8" M BSPT	1
21	44890	70075/T	WASHER 50mm STAINLESS STEEL	1
22	47211		SUMP COMPLETE	1
23	PA21003021		FIXED VENTURI INJECTOR 2.1 mm	1
24	48734		PIPE SAFETY VALVE	1
25	72034	70291/U	NIPPLE 3/8" F BSPP - 3/8" M BSPT	1
26	46213-A		SAFETY VALVE COMPLETE	1
27	44901-A		SUPERWOOL PLUS BLANKET DISC NO HOLE	1
28	44901-C		SUPERWOOL PLUS BLANKET STRIP	1
29	44899-B	44900	SUPERWOOL PLUS BLANKET STRIP	1
30	44901		SUPERWOOL PLUS BLANKET DISC WITH HOLE	1
31	44910-A		STACK COMPLETE-MINI	1
32	44091		BURNER SUPPORT COMPLETE	1
33	44101		GASKET - BURNER SW HT PAPER	1
34	44902-E01		BURNER WITH NOZZLE 1.35 230V 50HZ 1PH	1
35	48314		MOTOR 2.2kW 2POLE-MEC 90L-MALESHAFT 18mm	1
36	48243-A		FLANGE SOGA 2.2kW 2P	1
37	1PP74-A		WW95 DX HOLLOW SHAFT+BS HEAD+VALVE 3/8"	1
38	44893	70329/L	PLUG	1
39	47036	70921/U	HOSEBARB 1/2" M BSPT - 1/2" HOSEBARB	1
40	44007		ELBOW 3/8" M BSPT - 1/2" HOSEBARB 10bar	1
41	70301		ELECTRICAL PANEL ASSEMBLY COMPLETE	1
42	70571		CABLE TIE G200x4.6N	7
43	70570		CABLE TIE G100x2.5N	2
44	70572		CABLE TIE G300x7N	1
45	48705 C		HP HOSE 0.24m 1/4" FBSPP-1/4" FBSPP 250bar	1
46	48706-G		HP HOSE 0.39m 3/8" FBSPP-3/8" FBSPP 210bar	1
47	48733-A	70036/E	HOSE AQUAGEN 1/2" 320mm	1
48	48733-B	70036/E	HOSE AQUAGEN 1/2" 420mm	1
49	48749-A		H/P HOSE 8m 3/8" F BSPP-3/8" F BSPP 210bar	1
50	44930		BASKET COMPLETE	1
51	47002		DETERGENT BOTTLE 5l NATURAL	1
52	46241		2 STEP PLASTIC DET FILTER 1/4" HOSE BARB	1
53	48546		TANK PROTECTION COMPLETE	1
54	48553		TANK RETAINER COMPLETE	2
55	48071		BURNER PROTECTION COVER	1
56	48072		COVER COMPLETE	1
57	46236		FASTENING KNOB	6
58	48440	70595	PROTECTIVE MOULDING HOT WATER	1
59	48442	70595	PROTECTIVE MOULDING 900mm	1
60	48876		LANCE HOLDER	2
61	48750-B		CAP WITH BREATHER D90 BLACK	1
62	PA26025050		AR1 B M22 3PCS SCREW-TYPE CPL.-3/8M BSP	1
63	M4022105010		MV925+MV70+ARF 30l/min 280bar 160°C	1
64	M392301		DOUBLE LANCE 684mm - M22 X1.5 - 1/4" NPTF	1
65	70014-03515		HIGH PRESSURE NOZZLE 1/4" M NPT 035 15°	1
66	M0124710120		LOW PRESSURE NOZZLE 600 50° 50bar 150°C	1
67	33265		WHEEL AC 250 250mm - BORE Ø20mm	4
68	33265-B		HUB CAP COVER G48 BLACK	4
69	33265-C		HUB CAP BLOCK 20 Ø20.0mm	4
70	70050-F		FULL NUT M8 x 1.25 - 6	10

ITEM NO.	PART NUMBER	MATERIAL	DESCRIPTION	QTY.
71	70053-G	-	HEXAGON DOMED CUP NUTS M6 x 1.0	2
72	199180700		SCREW M 6x10 UNI 5739	4
73	70104-I		SCREW HEX HEAD M6 x 1.00 x 16 -4.8	4
74	70106-P		SCREW HEX HEAD M8 x 1.25 x 25 - 4.6	4
75	70120-I		SOCKET CAP SCREW M6 x 1.00 x 16 - 12.9	4
76	70141-D		PHILLIPS PAN HEAD M4 x 0.7 x 8	4
77	70230-B		POP RIVET 4.8x1 8 HEAD 14	2
78	70196		HEX HEAD SELF-DRILL SCREW COLLAR 4.8x16	22
79	70200-E		FLAT WASHER 6.50 x 13 x 1.20	4
80	70200-F		FLAT WASHER 6.50 x 16 x 1.20	2
81	70200-MM		FLAT WASHER 1/2" x 1 1/8" x 16 GAUGE	1
82	70200-HH		FLAT WASHER 8.50 x 25 x 1.60	10
83	70200-P		STANDARD FLAT WASHER 20.50 x 35 x 3	4
84	70210-B		INTERNAL TOOTH LOCK WASHER M 4	4
85	70210-D		INTERNAL TOOTH LOCK WASHER M 6	8
86	70220-F		SPRING LOCK WASHER M8	14
87	70597-A		HOSE CLAMP 304SS 16-8mm 8mm WIDE	7
88	70597-D		EAR CLAMP 304SS21-18.5mm 7mm WIDE	4
89	20200		AUSTRALIAN MADE LABEL	1
90	20201		CAUTION HOT LABEL	1
91	20205		PARTS & SERVICE LABEL	1
92	20222		CAUTION DISCONNECT POWER LABEL	2
93	20240		SERIAL NUMBER LABEL	1
94	20241		MODEL LABEL	1
95	20246		DIESEL ONLY LABEL	1
96	20247-A		BURNER LABEL	1
97	20252		SPITWATER LARGE LOGO LABEL	2
98	48651		PALLET COMPLETE	1
99	48650		PACKAGING 10-120H	1
100	72030		PACKING BRACKETS	6
101	72029		AXLE BRACKET-FOR PALLET	2
102	20242		PACKAGING LABEL	2



	DATE	NAME
APPROVED		
CHECKED		
DRAWN	13/10/2017	Rajdev

DO NOT SCALE DRAWING

SCALE: 1:3

THIRD ANGLE

SPITWATER AUSTRALIA

HEAD OFFICE AND MANUFACTURING PLANT
953 METRY STREET, ALBURY,
NSW 2640, AUSTRALIA
PH. 02 60257255 FAX. 02 60401187
E-MAIL: enquiries@spitwater.com
WEB SITE: www.spitwater.com

DESCRIPTION:	10-120H 1800PSI 10L/M 3HP 1PH 240/50
MATERIAL:	
TIME OF PRODUCTION:	
ATOT-FINISH:	

PART No. **SLD09**

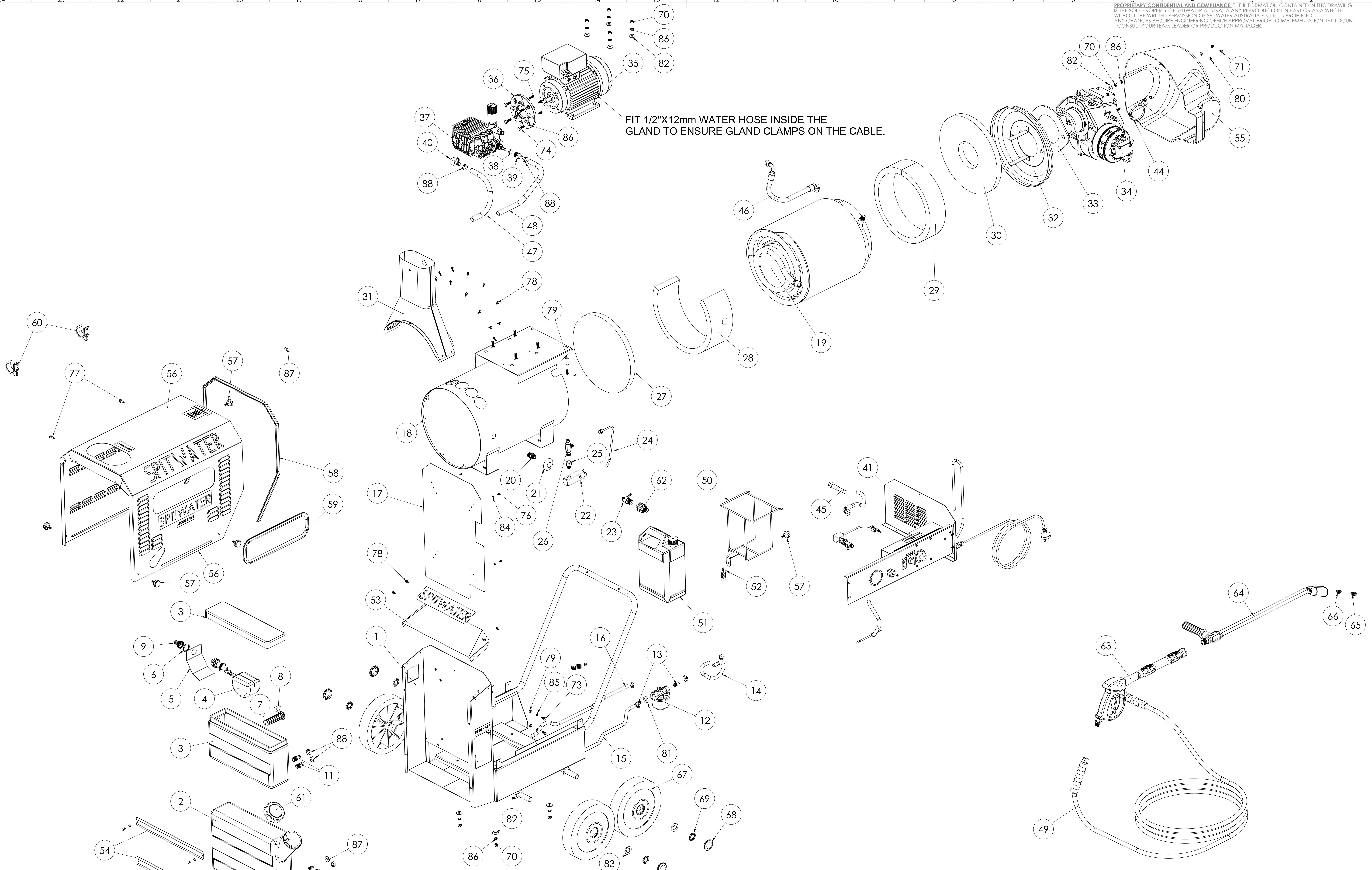
QTY: -

SHEET 1 OF 3

REV.	SERIAL NUMBER	ISSUED FOR CONSTRUCTION/DN	AMENDMENT	BY,CHK/APP	DATE
A					6/04/2016

NOTES:

PROPRIETARY CONFIDENTIAL AND COMPLIANCE: THE INFORMATION CONTAINED IN THIS DRAWING IS THE SOLE PROPERTY OF SPITWATER AUSTRALIA. ANY REPRODUCTION IN PART OR AS A WHOLE WITHOUT THE WRITTEN PERMISSION OF SPITWATER AUSTRALIA Pty.Ltd. IS PROHIBITED. ANY CHANGES REQUIRE ENGINEERING OFFICE APPROVAL PRIOR TO IMPLEMENTATION. IF IN DOUBT - CONSULT YOUR TEAM LEADER OR PRODUCTION MANAGER.



FIT 1/2"X12mm WATER HOSE INSIDE THE GLAND TO ENSURE GLAND CLAMPS ON THE CABLE.

REV. A	ISSUED FOR CONSTRUCTION/DN	6/04/2016
SERIAL NUMBER	AMENDMENT	BY: CHK/APP DATE

NOTES:

	DATE	NAME
APPROVED		
CHECKED		
DRAWN	13/10/2017	Rajdev

DO NOT SCALE DRAWING

SCALE: 1:5
THIRD ANGLE

SPITWATER AUSTRALIA
 HEAD OFFICE AND MANUFACTURING PLANT
 953 METRY STREET, ALBURY,
 NSW 2640, AUSTRALIA
 PH. 02 60257255 FAX. 02 60401187
 E-MAIL: enquiries@spitwater.com
 WEB SITE: www.spitwater.com

DESCRIPTION:
10-120H 1800PSI 10L/M 3HP 1PH 240/50

MATERIAL:

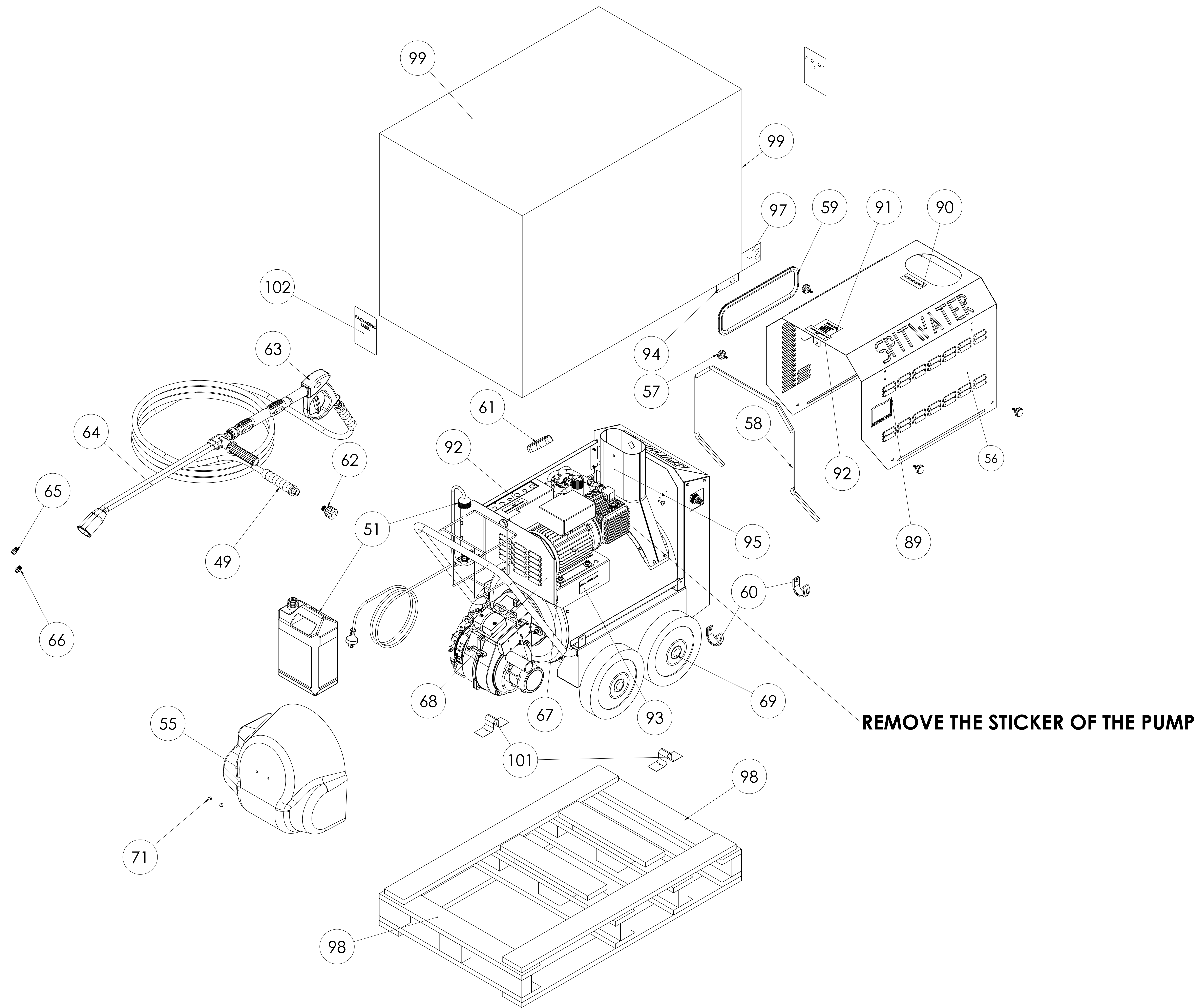
TIME OF PRODUCTION:

ATOT:
FINISH:

PART No.
SLD09

QTY: -

SHEET 2 OF 3



REMOVE THE STICKER OF THE PUMP

	DATE	NAME
APPROVED		
CHECKED		
DRAWN	13/10/2017	Rajdev

SCALE:
1:10



HEAD OFFICE AND MANUFACTURING PLANT
 953 METRY STREET, ALBURY,
 NSW 2640, AUSTRALIA
 PH. 02 60257255 FAX. 02 60401187
 E-MAIL: enquiries@spitwater.com
 WEB SITE: www.spitwater.com

DESCRIPTION:
10-120H 1800PSI 10L/M 3HP 1PH 240/50

PART No.
SLD09

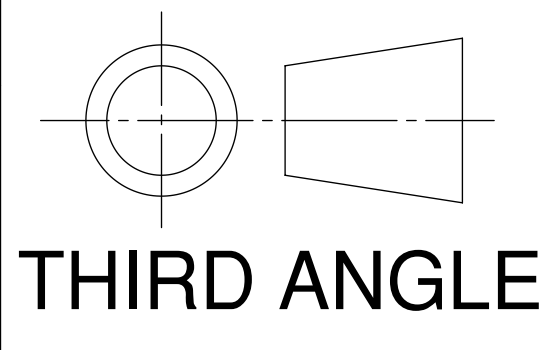
MATERIAL:

QTY: -

TIME OF PRODUCTION:
ATOT:-
FINISH:

SHEET 3 OF 3

DO NOT SCALE DRAWING



REV.	SERIAL NUMBER	ISSUED FOR CONSTRUCTION/DN	AMENDMENT	BY: CHK/APP	DATE
A					6/04/2016

NOTES: